

### PILOT OPERATED

#### General Description

A range of compact 3/2 and 5/2 pilot operated spool valves in stainless steel for use on gases and liquids.

- Compact.
- 3/2 and 5/2 versions.
- Non lube.
- Meet NACE standard.
- Stainless steel internals.

#### Operating Medium

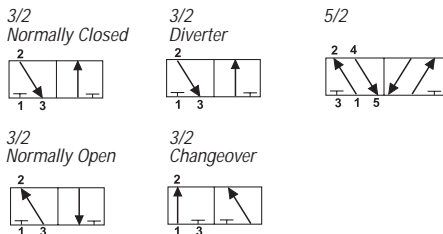
##### Gases

Filtered lubricated or non-lubricated air, inert gas, sweet (*natural*) gases. Sour gas option available (*details on application*)

##### Liquids

Low pressure hydraulic, mineral oil or water.

#### Functional Symbols



#### Technical Data

##### Ports

- 1/2" NPT (*BSP option available*)
- 1/8" NPT pilot ports

##### Working Pressure (gases & liquids)

- 12 bar (174 psi)

##### Cv (Kv)

- 3/2 valves 3.5 (53)
- 5/2 valves 3.5 (53)

##### Working Temperature

- -20°C to +180°C (-4°F to +356°F)

##### Minimum Pilot Pressure

- At 6.3 bar (90psi) body pressure  
3/2 and 5/2

Spring return 3 bar (45psi)

Pilot return 2 bar (30psi)

##### Maximum Flow

- 6 bar (87 psi), 1 bar (14.5 psi) differential
- 3/2 - 3500 L/min (123 SCFM)
- 5/2 - 3500 L/min (123 SCFM)



#### Construction Materials

- Stainless Steel AISI 316L to NACE MR-01-75 Body
- Stainless Steel AISI 316L to NACE MR-01-75 Spool
- 316 Stainless Steel Spring
- Fluoroelastomer Seals

### Preferred Models

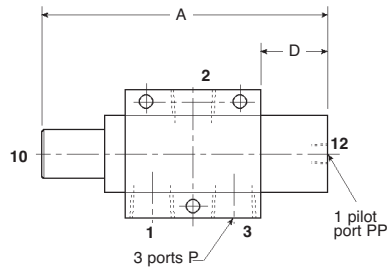
Model Number	Description	Weight kg (lbs)	Symbol
4326M21-VS2B	1/2" NPT 3/2 Pilot operated, spring return	1.40 (3.09)	
4326M212VS2B	1/2" NPT 3/2 Pilot operated, spring return with latch lock, manual reset	2.00 (4.41)	
4326M218VS2B	1/2" NPT 3/2 Pilot operated, spring return with reverse latch lock, manual reset	2.00 (4.41)	
4326B11-VS2B	1/2" NPT 3/2 Pilot operated, pilot return	1.50 (3.31)	
4526M21-VS2B	1/2" NPT 5/2 Pilot operated, spring return	2.00 (4.41)	
4526M212VS2B	1/2" NPT 5/2 Pilot operated, spring return with latch lock, manual reset	2.60 (5.73)	
4526M218VS2B	1/2" NPT 5/2 Pilot operated, spring return with reverse latch lock, manual reset	2.60 (5.73)	
4526B11-VS2B	1/2" NPT 5/2 Pilot operated, pilot return	2.10 (4.63)	

### PILOT OPERATED

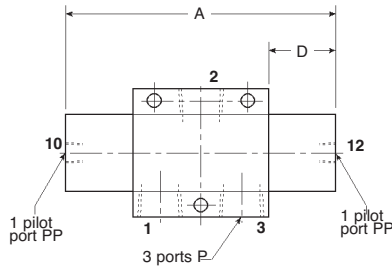
### INSTALLATION DIMENSIONS mm (inches)

#### 3/2 Pilot Solenoid Operated - Spring or Pilot Return

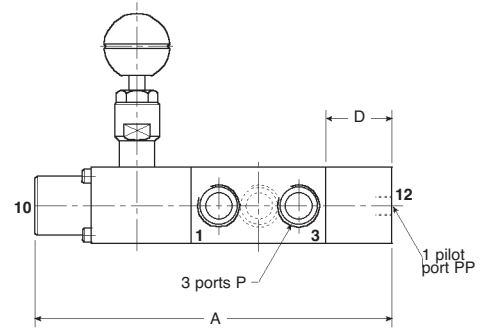
*Pilot Operated, Spring Return*  
4326M21-VS2B



*Pilot Operated, Pilot Return*  
4326B11-VS2B



*Pilot Operated, Spring Return with Latch Lock*  
4326M212VS2B, 4326M218VS2B

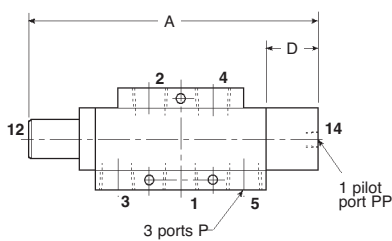


For basic valve dimensions, see 3/2 pilot return bases on page 1600.4

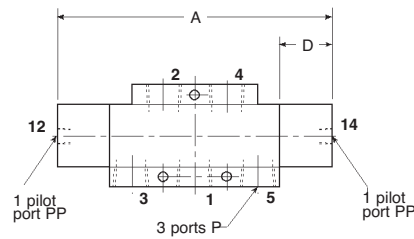
Model Number	A	D	P	PP
4326M21-VS2B	137 (5.39)	32 (1.26)	1/2" NPT 1/2" NPT	1/8" NPT 1/8" NPT
4326B11-VS2B	129 (5.08)	32 (1.26)	1/2" NPT 1/2" NPT	1/8" NPT 1/8" NPT
4326M212VS2B & 4326M218VS2B	172 (6.77)	32 (1.26)	1/2" NPT 1/2" NPT	1/8" NPT 1/8" NPT

#### 5/2 Pilot Solenoid Operated - Spring or Pilot Return

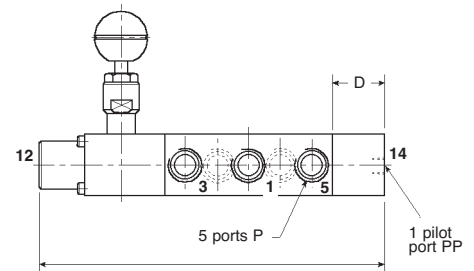
*Pilot Operated, Spring Return*  
4526M21-VS2B



*Pilot Operated, Pilot Return*  
4526B11-VS2B



*Pilot Operated, Spring Return with Latch Lock*  
4526M212VS2B, 4526M218VS2B



For basic valve dimensions, see 3/2 pilot return bases on page 1600.4

Model Number	A	D	P	PP
4526M21-VS2B	175 (6.89)	32 (1.26)	1/2" NPT 1/2" NPT	1/8" NPT 1/8" NPT
4526B11-VS2B	167 (6.57)	32 (1.26)	1/2" NPT 1/2" NPT	1/8" NPT 1/8" NPT
4526M212VS2B & 4526M218VS2B	210 (8.27)	32 (1.26)	1/2" NPT 1/2" NPT	1/8" NPT 1/8" NPT