



## GRDDE-52R-SEB

### Fork Properties

#### 1500kgs load capacity twin wheel forged kingpinless castors

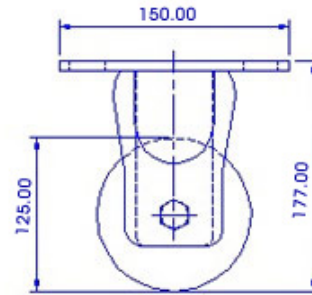
- Single piece forged alloy steel top plate & fork base
- Precision CNC machined raceways
- Induction hardened raceways ensure swivel head longevity
- Totally sealed swivel head with grease nipple
- 6mm thick cylindrically formed legs robotically welded inside & outside to 65mm x 23 fork spacing
- 12mm Wheel Axle
- Finish : Zinc plated; ROHS Compliant or black polymer color coated
- Options : 4 way directional lock, Total lock, Wheel face brake

### Wheel Properties

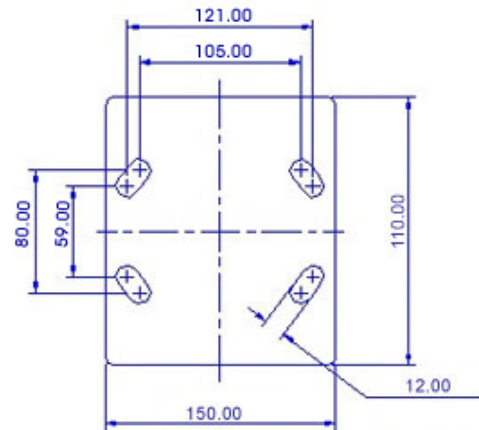
Muvtons black elastic rubber tyred wheels firmly chemically bonded to precision machined cast iron cores. Highly resilient  $75^{\circ} \pm 5^{\circ}$  shore a rubber provides very smooth and silent running. Can be used for power towing applications by suitably de rating the load capacity. Wheel bearing options: sealed precision ball bearings, tapered roller bearings or roller bearings. Temperature range :  $-20^{\circ}\text{C} +75^{\circ}\text{C}$  tread options: anti static, conductive and oil resistant wheels are available.

### Technical Data

Castor Type	Rigid Castor without Brake
Wheel Material	Elastic Rubber
Wheel Hardness	$75^{\circ} \pm 5^{\circ}$ Shore A
Wheel Center	Cast Iron
Wheel Dia(mm)	125
Tread Width(mm)	50 x 2
Load Capacity(kg)	550
Wheel Bearing	Ball Bearing
Overall Height(mm)	177
Top Plate(mm)	150 x 110
Bolt Hole Centers	105 x 80 to 121/59
Non Marking	-
Heat Resistant	Yes
Noise Reduction	Yes



FRONT VIEW



TOP VIEW