



GRDDE-42R-SZS

Fork Properties

1500kgs load capacity twin wheel forged kingpinless castors

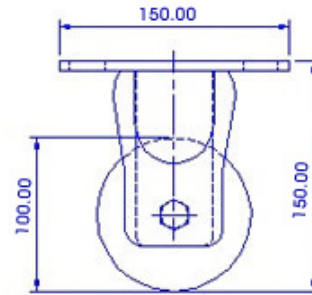
- Single piece forged alloy steel top plate & fork base
- Precision CNC machined raceways
- Induction hardened raceways ensure swivel head longevity
- Totally sealed swivel head with grease nipple
- 6mm thick cylindrically formed legs robotically welded inside & outside to 65mm x 23 fork spacing
- 12mm Wheel Axle
- Finish : Zinc plated; ROHS Compliant or black polymer color coated
- Options : 4 way directional lock, Total lock, Wheel face brake

Wheel Properties

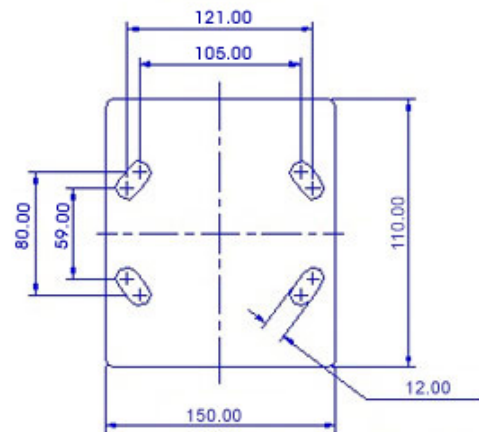
Muvtons premium soft durometer polyurethane treaded wheels $83^{\circ} \pm 3^{\circ}$ shore a, firmly bonded to precision machined cast iron cores. These wheels have been designed in response to noise problems and allow loads to be cushioned. The use of 'lively' polyurethane materials allows these wheels to 'flex & roll' over debris and obstacles without picking up objects. They are non-marking and floor protective. Tested & guaranteed against bond failures. Wheel bearing options : sealed precision ball bearings, tapered roller bearings or roller bearings. Temperature range: -20°c to $+85^{\circ} \text{c}$. Tread options : anti-static.

Technical Data

Castor Type	Rigid Castor without Brake
Wheel Material	Polyurethane
Wheel Hardness	$83^{\circ} \pm 3^{\circ}$ Shore A
Wheel Center	Cast Iron
Wheel Dia(mm)	100
Tread Width(mm)	50 x 2
Load Capacity(kg)	500
Wheel Bearing	Ball Bearing
Overall Height(mm)	150
Top Plate(mm)	150 x 110
Bolt Hole Centers	105 x 80 to 121/59
Non Marking	Yes
Heat Resistant	Yes
Noise Reduction	Yes



FRONT VIEW



TOP VIEW