



DABE100-165S-SAS

Fork Properties

12000kgs load capacity precision bearing castors

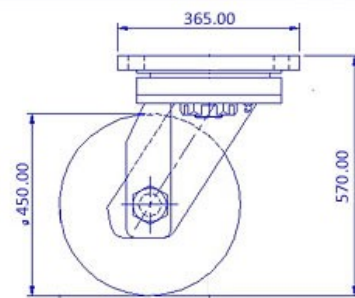
- ▶ Extra heavy fabricated steel top plate and fork base
- ▶ Combination of heavy duty opposed spherical roller thrust bearings in the swivel head allows this castor to swivel easily even under the most punishing conditions
- ▶ Totally sealed swivel head with grease nipple
- ▶ 35mm wheel axle
- ▶ Finish : Zinc Plated, ROHS compliant or black polymer color coated
- ▶ Options : 4 way directional lock, Wheel face brake

Wheel Properties

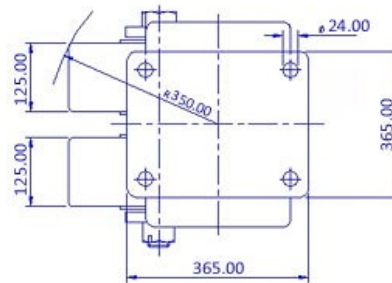
Muvtons premium polyurethane threaded wheels $93^{\circ} \pm 3^{\circ}$ Shore A, firmly bonded to precision machined cast iron cores offer low rolling resistance, smooth & noiseless running are non-marking and floor protective. These wheels possess high abrasion & cut resistance and are resistant to tearing. Tested & guaranteed against bond failures. Wheel bearing options : Sealed precision ball bearings, tapered roller bearings or roller bearings, color, light brown. Temperature range : -20°C to $+85^{\circ}\text{C}$. Tread options: Anti static : Conductive wheels are available.

Technical Data

Castor Type	Swivel Castor without Brake
Wheel Material	Polyurethane
Wheel Hardness	$93^{\circ} \pm 3^{\circ}$ Shore A
Wheel Center	Cast Iron
Wheel Dia(mm)	450
Tread Width(mm)	125 x 2
Load Capacity(kg)	11500
Wheel Bearing	Ball Bearing
Overall Height(mm)	570
Swivel Radius(mm)	350
Top Plate(mm)	365 dia
Bolt Hole Centers	4 holes at 300 p.c.d
Non Marking	Yes
Heat Resistant	Yes
Noise Reduction	Yes



FRONT VIEW



TOP VIEW