



BHS-512R-PNY

Fork Properties

350Kgs. Load Capacity Medium Duty Castors

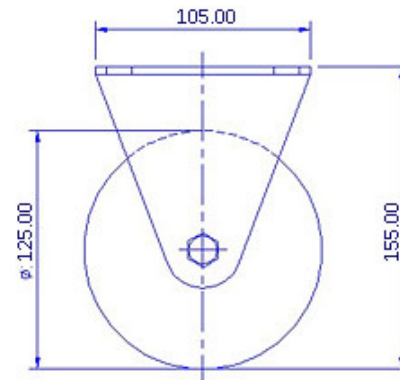
- Heavy duty pressed steel brackets
- Swivel brackets with double ball bearing raceways, dynamically pressed ensure low swivel headplay and long service life
- Kingpinless swivel head design in larger wheel diameters eliminates chances of kingpin failure
- Finish : Zinc Plated
- Options : Total lock brake system

Wheel Properties

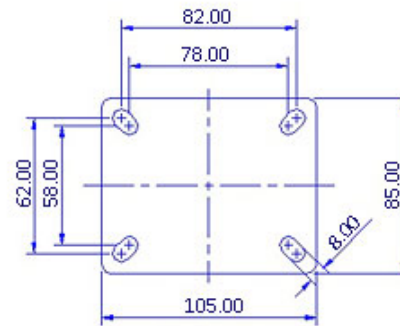
Liquid Cast Quality polyurethane chemically and mechanically to a strong polyamide core. Non-corrosive & non-marking 95° shore A, non-Staining, abrasion-resistant, floor-saving, low-noise operation, low rolling resistance tested & guaranteed against bond failures. Wheel Bearing Options: Sealed precision ball bearing or roller bearings. Temperature range:-20°C to +85°C. Alternatively available with soft polyurethane tread.

Technical Data

Castor Type	Rigid Castor without Brake
Wheel Material	Polyurethane
Wheel Hardness	95° Shore A
Wheel Center	Nylon Polyamide
Wheel Dia(mm)	125
Tread Width(mm)	35
Load Capacity(kg)	250
Wheel Bearing	Ball Bearing
Overall Height(mm)	155
Top Plate(mm)	105 x 85
Bolt Hole Centers	82 x 62 to 78 x 58
Non Marking	Yes
Heat Resistant	Yes
Noise Reduction	Yes



FRONT VIEW



TOP VIEW