



*Yii Lee*

# ▶ **YLL-3AWF**

**FULLY AUTOMATIC WATER-BASED P.P. FILM LAMINATING MACHINE**



# YLL-3AWF FULLY AUTOMATIC WATER-BASED P.P. FILM LAMINATING MACHINE

(TWIN DISC-KNIFE+FLYING-KNIFE SYSTEM)

## YLL - CONFIGURATION

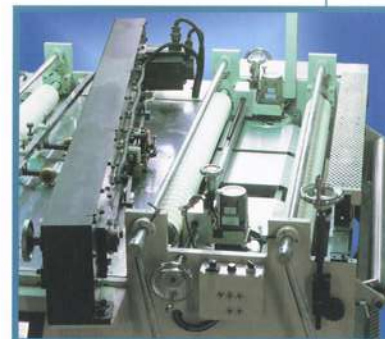
- FEEDER SYSTEM
- DUST REMOVAL SYSTEM
- LAMINATING SYSTEM
- DRYING SYSTEM
- FLYING-KNIFE CUTTING SYSTEM
- CHILL SYSTEM
- STACKER SYSTEM

## OPTION

- DUST REMOVAL SYSTEM
- CHILL SYSTEM
- STACKER SYSTEM



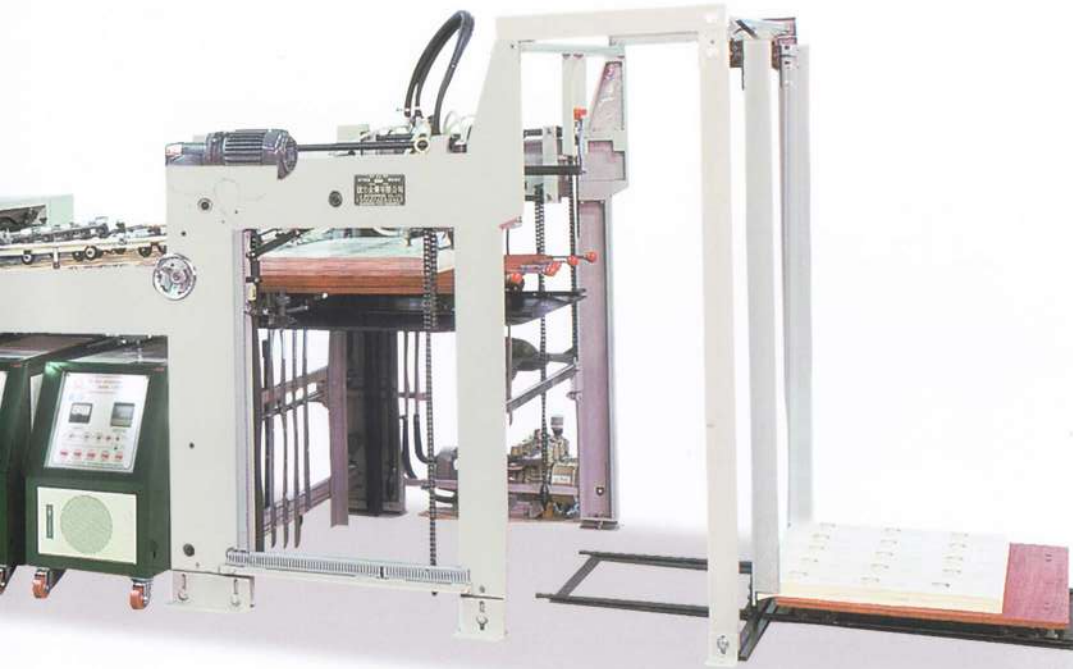
| Model                                     | YLL-3AWF                                     |
|---|--|
| Laminating Width                          | 1200 x 900mm                                 |
| Laminating Speed (Twin Disc-Knife System) | 10m/min-60m/min                              |
| Laminating Speed (Flying-Knife System)    | 10m/min-35m/min                              |
| Laminating Pressure                       | 100kg/cm <sup>2</sup> -150kg/cm <sup>2</sup> |
| Laminating Temperature                    | 50°C-100°C                                   |
| Electric Heater                           | 52kw   |
| Power Required                            | 15HP   |
| Machine Dimension (L x W x H)             | 10473 x 2415 x 2800mm                        |
| Total Weight (Approx)                     | 10200kg                                      |



The catalogue is for reference only, special designed products are optional



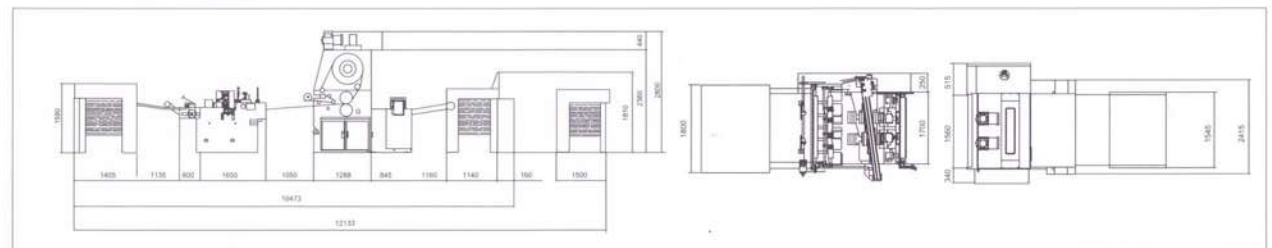
## WATER-BASED CONFIGURATION



### Function:

1. Newest type of high efficient feeder adopt vacuum pump to feed the paper and enable to provide paper stability and reduce noise. The stream-type mechanism enables non-stop operation, no wastage of PP film, saves time and manpower.
2. The special mechanism for paper rectification is fits for all kinds of thick and thin paper size feeding, also ensured accurate lamination position. That makes delicate quality. It is easy to operate speed and accurately.
3. The coating system is controlled by single side modulation to ensure of even coating. The auto film lamination device allowed the film unload operation by control motor.
4. The new type of dryer equipment designed by heating wind and green house structure. It mechanism enable PP film to reached speed dried in shorter time. This machine was specially created to ensure optimum space application and to reducing operational cost.
5. The auto paper cutter its rotary knife and pulled wheel able to separate accurately and tear up the laminated paper. The anti-worn belt device to feeding papers, so as to adapt for the needs of auto paper stacker system unit.
6. This machine adopt with the clutch system of un-single site for paper feeding and able to decide the time for feeding which could reduce paper wastage.
7. The electronic circuit designed system enable the operating speeds easily controlled, reduce noise and low breakdown rate. It's a product of delicate innovation.

YLL-3AWF





**YII LEE ENTERPRISE CO.,LTD.**

NO.172-21, SAN YANG RD., SAN CHUNG CITY, TAIPEI COUNTY, TAIWAN

TEL : 886-2-2981 6893 FAX : 886-2-2989 6725

E-mail : [yilLee@ms31.hinet.net](mailto:yilLee@ms31.hinet.net)

[http : //www.yilLee.com.tw](http://www.yilLee.com.tw)

**YII LEE MACHINERY ( S.Z ) CO., LTD.**

XIANGSHANG ROAD THE THIRD INDUSTRY AREA LUOTIAN COUNTY

SONGAN TOWN, BAOAN AREA SHENZHEN CITY, CHINA 518105.

TEL : 86-755-2706 3456-8 FAX : 86-755-2706 3459

E-mail : [info@yilLee.com](mailto:info@yilLee.com)

[http : //www.yilLee.com.cn](http://www.yilLee.com.cn)

**YII LEE CO., LTD ( KUNSHAN ) BRANCH.**

RM 202, 6F, HUANGJIA GARDEN, NO.388, BEIMEN ROAD,

KUNSHAN CITY, CHINA 215300.

TEL : 86-512-5716 3513 / 5716 3613

FAX : 86-512-5716 3619